



SEMIRARA
MINING & POWER
CORPORATION

COMPANY PROFILE



VISION, MISSION AND VALUES



Our Vision: COAL Towards An Energy-Sufficient Philippines

Our Mission: To fulfill its commitment to provide affordable power to the Filipino people through the responsible use of coal as energy source, Semirara Mining and Power Corporation will continue to remain as:

- The undisputed leader in the coal mining industry and vertically integrated coal-based power producer in the Philippines
- Playing a vital role in the energy sector & working in harmony with the government to promote the use of coal as a reliable and economical power source.
- Supplying its customers with quality coal that meets their stringent specifications
- Providing reasonable economic returns to its investors & business partners
- Empowering its employees to prosper in a climate of integrity & excellence
- Working in partners with its host communities to improve their sustainability while engaging in the judicious use and rational conservation of the country's natural resources.

Our Values: In fulfilling our vision, we are guided by :

Teamwork that enables us to work toward common goals;

Excellence that drives us to deliver outstanding results;

Loyalty that keeps us steadfast over challenges and time;

Integrity that upholds the cornerstone of our business ethics;

Commitment that fuels realization of our mission; and

Professionalism that embodies our work quality.

ORGANIZATIONAL STRUCTURE



SEMIRARA
MINING & POWER
CORPORATION

*A member of the DMCI Holdings, Inc.
group of companies*

100%

Sem-Calaca
Power Corp.

Sem-Calaca
RES Corp.

100%

Southwest
Luzon Power
Generation
Corp.

100%

*Sem-Cal
Industrial
Park
Developers,
Inc.

100%

*Semirara
Claystone,
Inc.

100%

*Semirara
Energy
Utilities, Inc.

100%

*St. Raphael
Power
Generation
Corp.

100%

*Sem-
Balayan
Power Power
Generation
Corp.

* *pre-operating*

MARKETS WE SERVE



INVESTMENT THESIS



The only vertically integrated coal-fired power plants in the Philippines

- *operates the biggest coal mine in the country that accounts for 97% of the total domestic production*
- *low-cost power producer*
- *stable supply of coal fuel for power plants*

Low coal production cost

- *controls the biggest deposit of open pit mineable coal assets in the country, with over 200 million tons of mineable reserves*
- *mining operations done in-house*
- *exempt from all taxes except income tax and government royalties*

Strong engineering core competence

- *established leading DMCI brand of engineering that provides innovative engineering solutions*
- *experienced management team*
- *stable supply of local talent*

-
- **sustainable robust long-term earnings**
 - **strong dividends**
 - **huge growth potential in power expansion**

ISLAND PROFILE

**Semirara Island, Caluya
Province of Antique**

**Land Area = 55 sq. km. or
5,500 hectares**

**Three (3) Barangays
Nine (9) Sitios**

Population ~ 16,661

Livelihood – Fishing & Farming

**Manila
350 Km.**

**Calaca
Batangas
250 Km.**

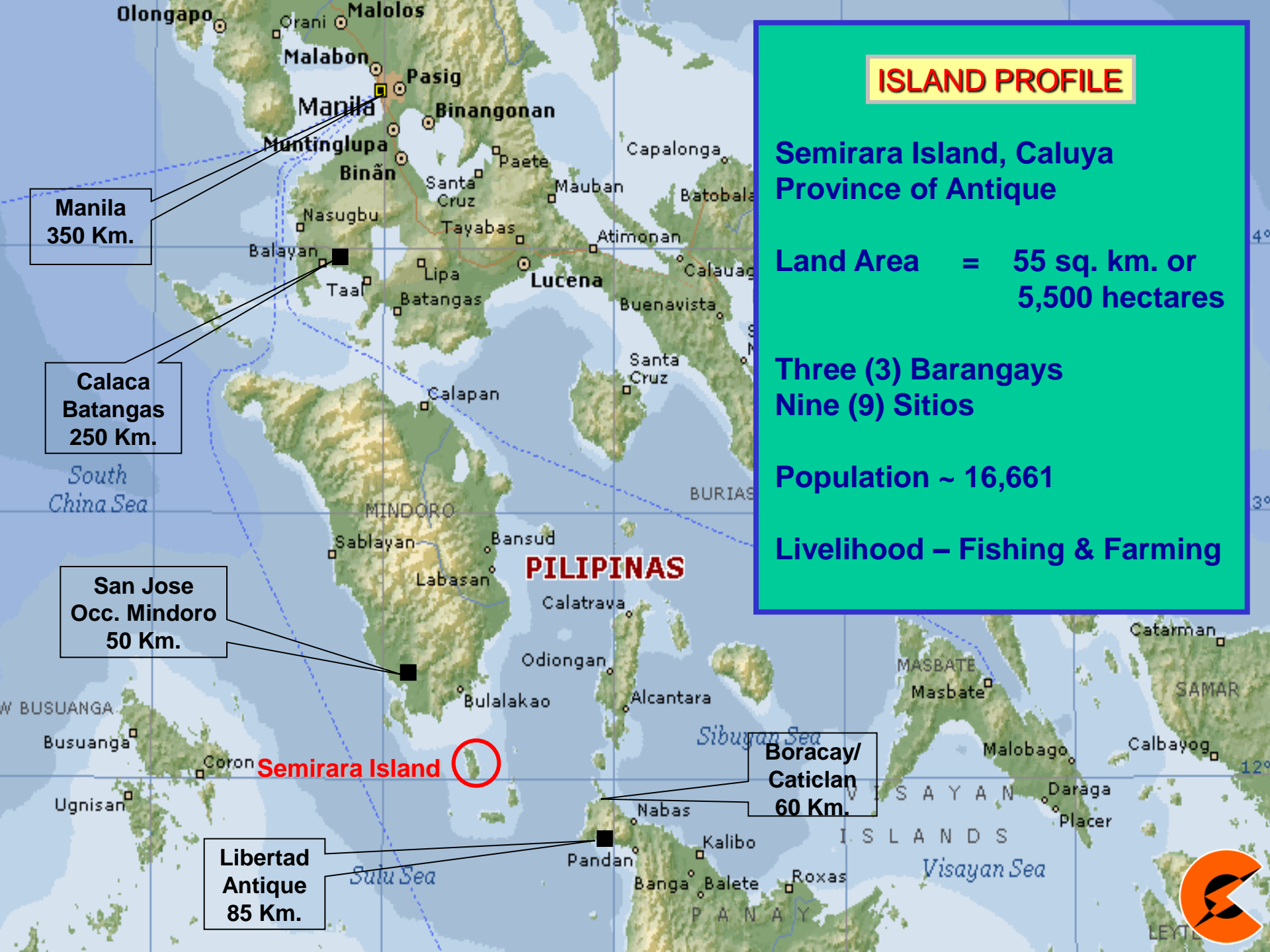
**San Jose
Occ. Mindoro
50 Km.**

**Libertad
Antique
85 Km.**

**Boracay/
Caticlan
60 Km.**

Semirara Island

PILIPINAS



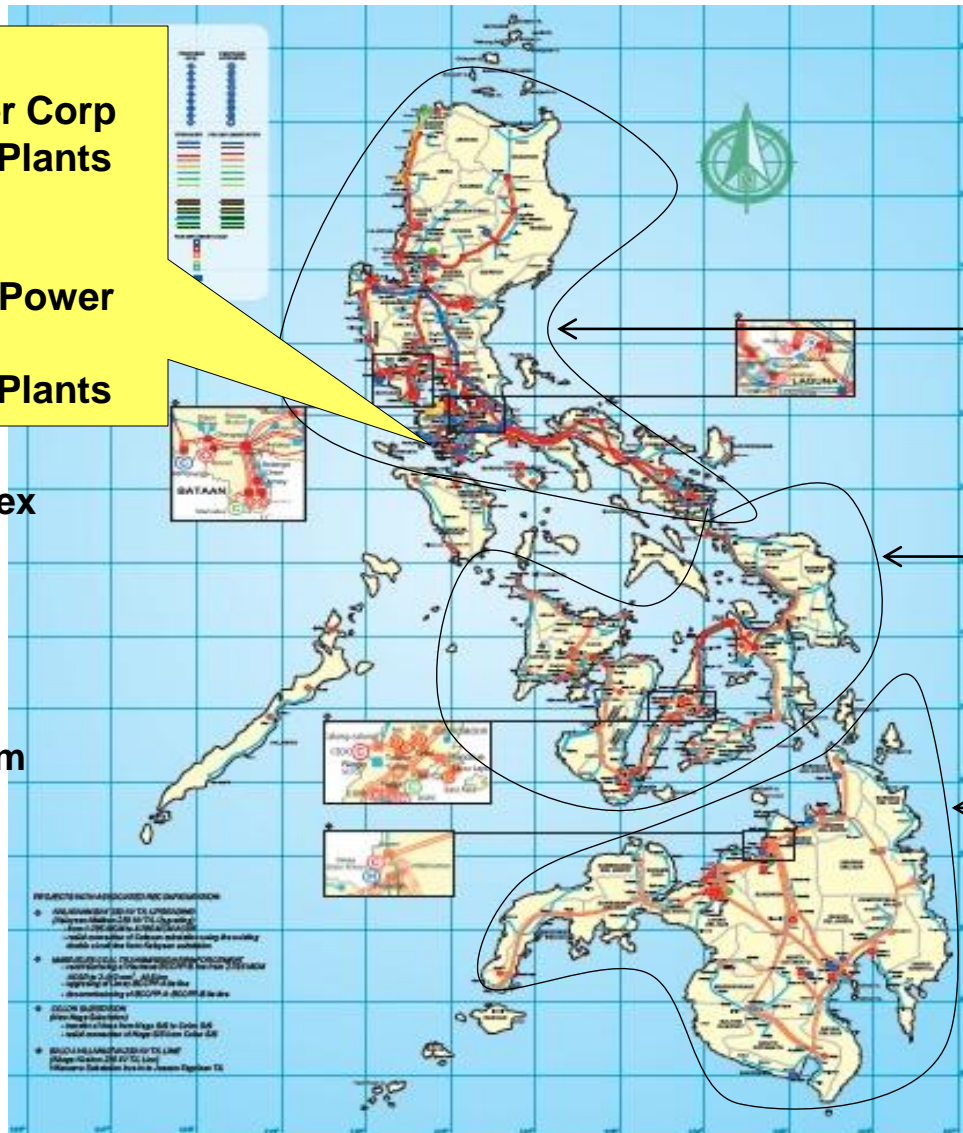
CALACA PLANTS LOCATION



**2 x 300 MW
SEM-Calaca Power Corp
Coal-Fired Power Plants**

**2x 150 MW
Southwest Luzon Power
Corp
Coal-Fired Power Plants**

- 167 hectare complex
- Units 1 & 2 cover 67 hectares
- about 115kms south of Manila
- 270kms by sea from Semirara Island



• Luzon & Visayas Grids are inter-connected

Luzon
Grid*

Visayas
Grid*

Mindanao
Grid

MILESTONES



- **1940** Pres. Quezon through Proclamation # 649 declared the islands of Semirara, Sibay, and Caluya of Antique as coal mining reservation
- **1980** Incorporated in the Philippines as a limited liability company
- **1983** Initial public offering, listing on the Philippines Stock Exchange
- **1984** Commercial production at the Unong mine commenced
- **1997** DMCI Holdings, Inc. (DMCI-HI) purchased 40% interest in Semirara
- **1998** Debt to equity conversion increased DMCI-HI's interest to 74%
Installation of coal washing plant
- **1999** New management team installed by DMCI-HI
- **1999-2000** Unong mine depleted, operations commenced at Panian;
Full shift from continuous to conventional mining system;
- **2004** Capital restructuring increased DMCI-HI's interest to 94.5%;
Declared stock dividend of PHP225m, consisting of 225m common shares;
Authorized capital increased to 1b shares
- **2005** International and Domestic Offering of 105.046m shares, comprising of 46.875m primary shares and 58.171m secondary offering, increased outstanding common shares to 296.875m; DMCI-HI's interest reduced to 60%
- **2007** Maiden voyage carrying 28.8K MTs of coal to Xiamen, China
SEC's Top 20 PLCs for Corporate Governance
- **2008** Coal Operating Contract is extended up to 14 July 2027
BOI Registration as expanding coal producer
ISO Certifications – ISO 9001:2000, ISO14001:2004, OHSAS 18001:2007
Exploratory drilling activities indicated substantial coal deposits
Silver Awardee for SEC's Top PLCs for Corporate Governance

MILESTONES



- **2009** Acquisition of 2 x 300 MW Calaca power plants (Sem-Calaca Power Generation Corp.)
Silver Awardee for SEC's Top PLCs for Corporate Governance
- **2010** Stock Rights Offering of 59.375m shares increased outstanding common shares to 356.25m
Silver Awardee for SEC's Top PLCs for Corporate Governance
Most Committed to a Strong Dividend Policy, Finance Asia Magazine's 10th Annual Best Managed Company's Poll
- **2012** Financial close of PHP 11.5 billion project debt facility to finance Phase 1 expansion
Commence Phase I power expansion of 2x150 MW in Calaca (Southwest Luzon Power Generation Corp.)
BOI Registration of Narra Mine under non-pioneer status, maximum of 8 years
- **2013** 2nd Runner Up, ASEAN Best Practices in Coal Projects – CSR category, 2013 ASEAN Coal Energy Awards
6th among Most Committed to a Strong Dividend Policy, Finance Asia Magazine's 13th Annual Best Managed Company's Poll
Among the top 10 finalists (out of 289 PLCs) in 2013 PSE Bell Awards for Corporate Governance
Awarded 2 new mining areas (Mindoro and Mindanao)
Incorporated 2 new corporations for power capacity expansion
- **2014** Issued 200% stock dividend
4th among Most Committed to a Strong Dividend Policy and
9th Best Corporate Social Responsibility, Finance Asia Magazine's
14th Annual Best Managed Company's Poll

MILESTONES



- **2015**
 - Started commissioning of SLPGC's 2 x 150 MW Plants
 - Among the top 50 publicly listed companies in the ASEAN
 - Titanium Awardee for Excellence in Corporate Governance and Investor Relations, 2015 The Asset Corporate Awards
 - Awarded Best Corporate Governance , 10th Finance Asia's Best Philippine Companies
 - Awarded 1st Runner Up for Corporate Social Responsibility, ASEAN Energy Awards
 - SCPC was awarded as Top 1 Corporate Tax Payer in the province of Batangas
- **2016**
 - BOI Registration of Molave Mine under non-pioneer status, maximum of 10 years
 - Amendment of ECC to increase mining capacity to maximum of 16 million tons
 - Commercial operations of SLPGC 2 x 150 MW CFB plants
 - Titanium Awardee for Excellence in Corporate Governance and Investor Relations, 2016 The Asset Corporate Awards
 - Silver Awardee for Public Relations Tool (2014 IAR), Anvil Awards
- **2017**
 - SLPGC received Certificate of Compliance from the Energy Regulatory Commission, allowing the plants to run at full capacity of 150 MW each
 - Gold Awardee for Public Relations Tool (2014 IAR), Anvil Awards

MILESTONES

Investment in Sem-Calaca Power Generation Corp.



The 2 x 300 MW coal-fired power plants in Calaca, Batangas were acquired by the Company in 2 December 2009 for \$361.7 M

MILESTONES

Investment in Southwest Luzon Power Generation Corp.



The 2 x 150 MW CFB coal-fired power plants were declared on commercial operations on 26 August 2016.

SEMIRARA RESOURCES

Coal and Other Reserves As of December 31, 2016



▶ Coal

Remaining Resources 288 million tons
Reserve **219** million tons

Remaining As of Jan.1, 2017

▶ Other Minerals

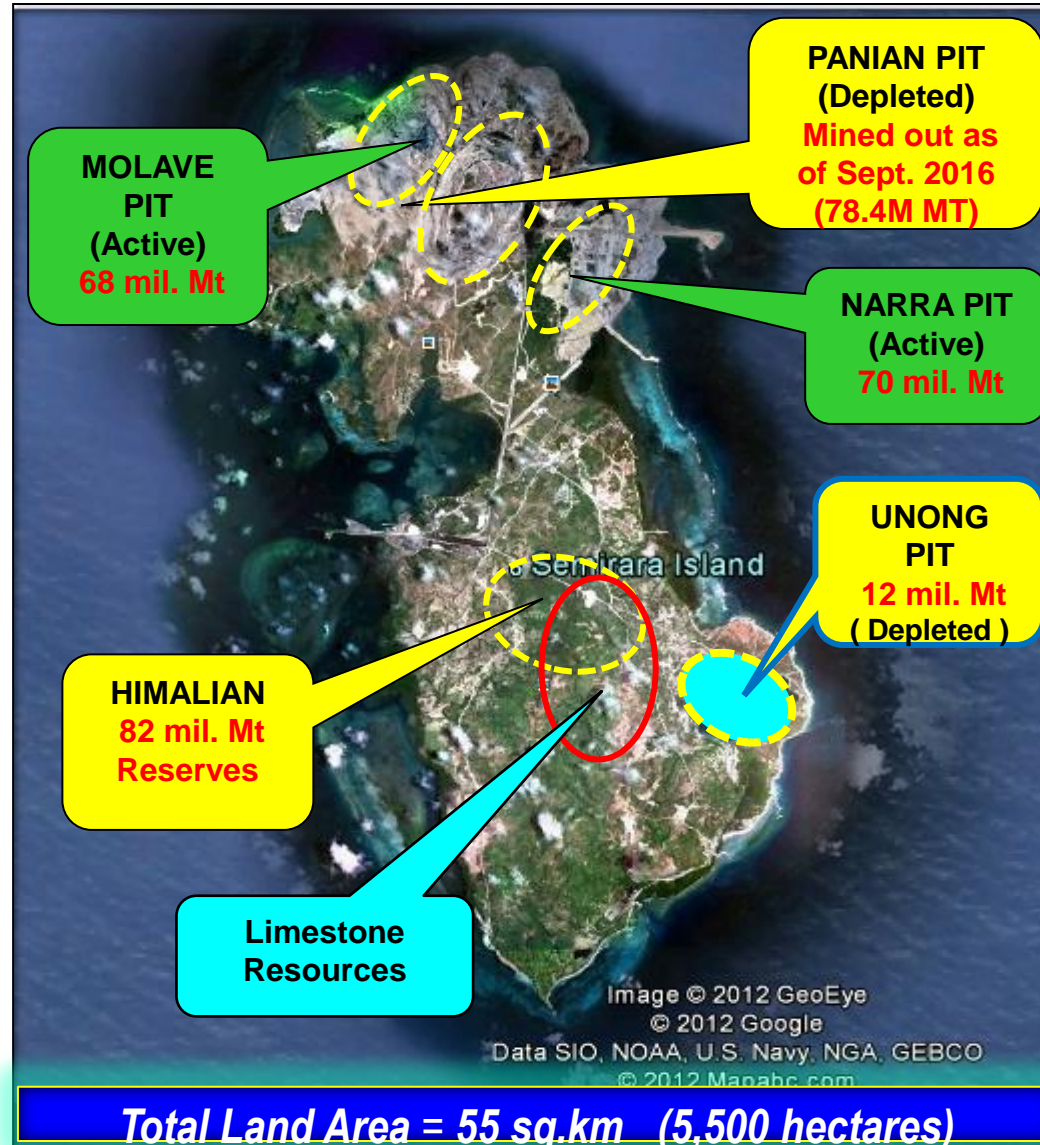
Limestone 1.2 Billion Mt
Clay..... 2.9 Million Mt

▶ In-house Drilling (2006-present)

743 Exploration & confirmatory drill holes

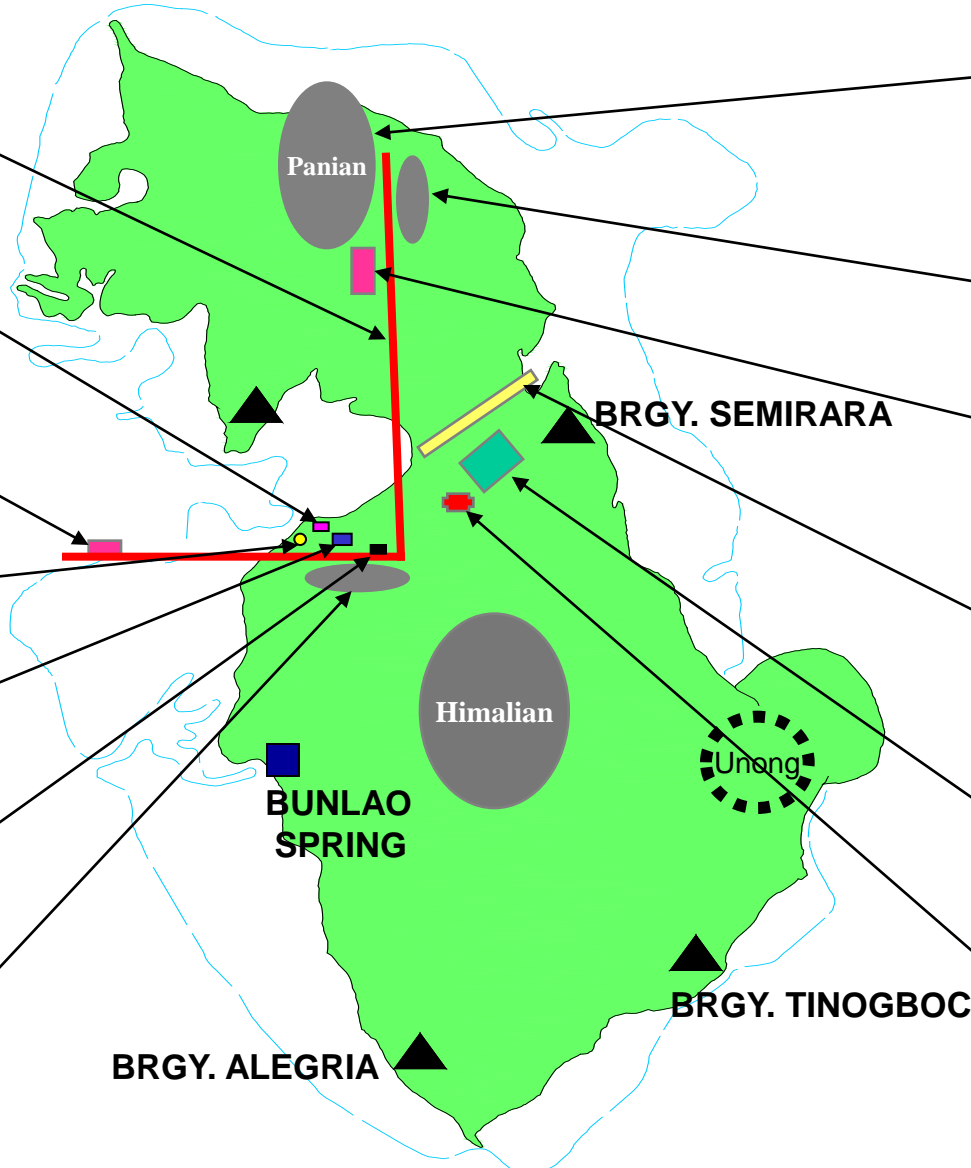
▶ Seismic Reflection Survey

(Ongoing around the Island)

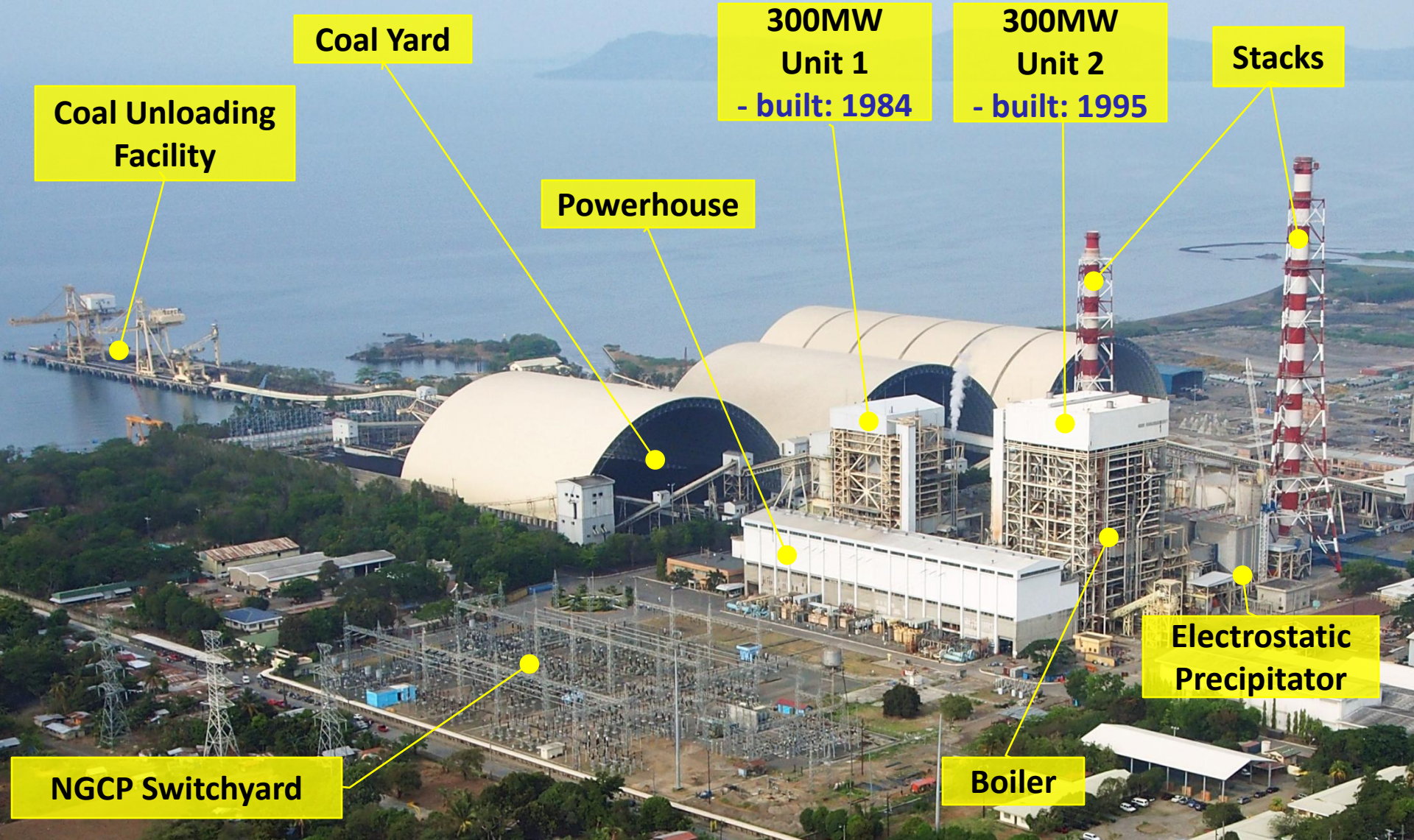


SEMIRARA RESOURCES

Facilities



SEM-CALACA FACILITIES



SEM-CALACA FACILITIES



Silo

Stacker/Reclaimer

Conveyor

Coal Yard

Transfer Tower

Coal Unloading Facility

SEM-CALACA OEM / EPC



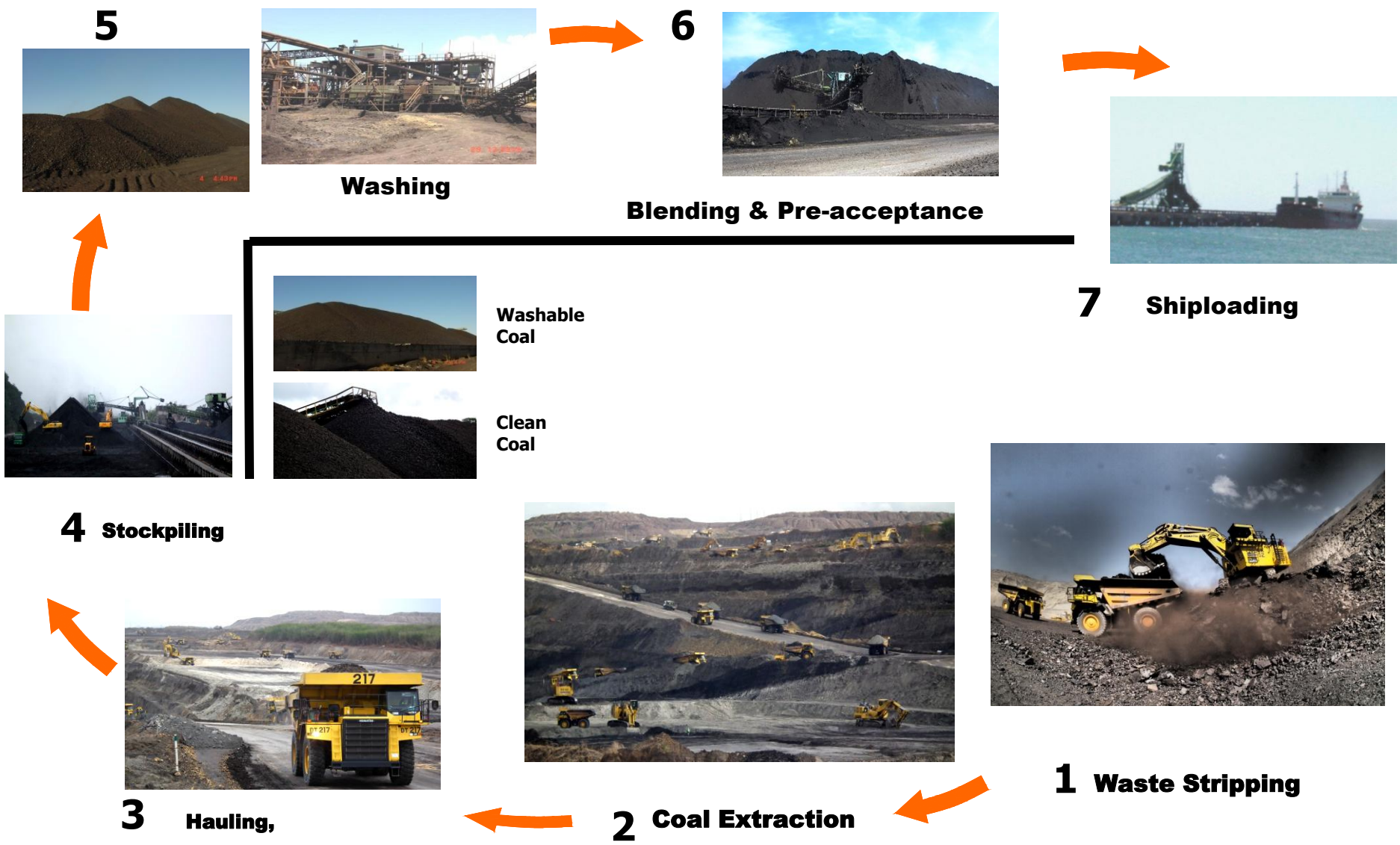
| EQUIPMENT | UNIT 1 | UNIT 2 |
|--------------------|------------------------------|---|
| Steam Generator | Foster Wheeler (FWEC), USA | Asea Brown Boveri/ Combustion Eng'g (ABB-CE), USA |
| Steam Turbine | Toshiba, Japan | GEC-Alsthom, France |
| Electric Generator | Toshiba, Japan | GEC-Alsthom, France |
| Condenser | Toshiba, Japan | GEC-Alsthom, France |
| EPC | Mitsui and Co., Japan | Mitsubishi, Japan |

PRODUCTION



& OPERATIONS

COAL PRODUCTION FLOW DIAGRAM



COAL SPECIFICATIONS



| PARAMETER | TYPICAL | | |
|---|---------|---|--------|
| | | | |
| Gross Calorific Value, Btu/lb (Air Dried) | 8,700 | - | 10,000 |
| Gross Calorific Value, Btu/lb (As Received) | 7,300 | - | 9,000 |
| Proximate Analysis | | - | |
| Ash % | 6 | - | 17 |
| Fixed Carbon % | 33 | - | 44 |
| Volatile Combustible Matter | 34 | - | 40 |
| Total Sulfur, % (Air Dried, ASTM D2015) | 0.20 | - | 1.00 |
| Total Moisture, % (As Received) | 21 | - | 29 |
| Residual Moisture, % (Air Dried) | 8 | - | 18 |
| <u>Hardgrove Grindability Index</u> | 40 | - | 50 |
| Size, mm | 50 | - | 200 |

COAL MINING EQUIPMENT

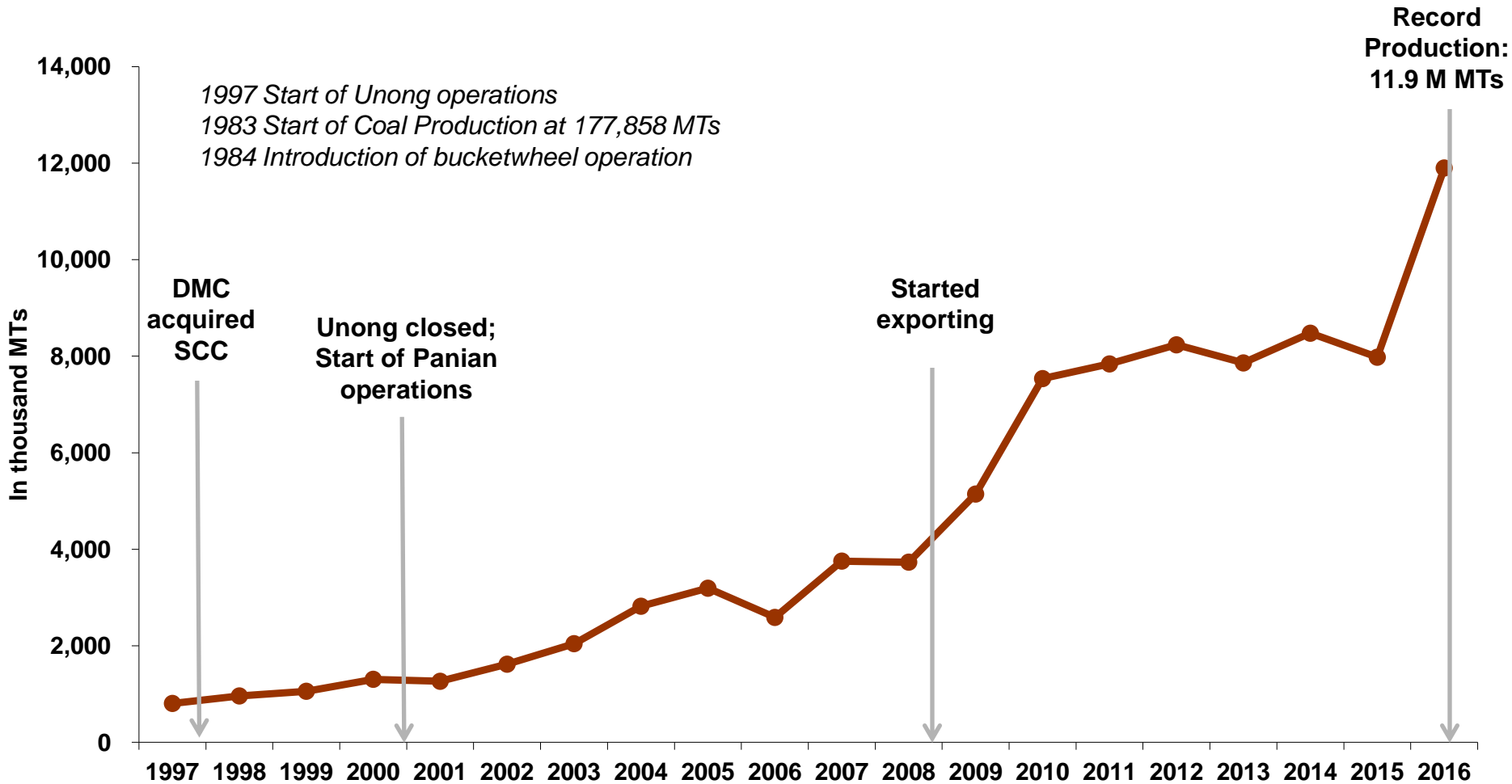
Capacity



| EQUIPMENT | # OF UNITS | | | | | | | | |
|------------------------------|------------|------------|------------|------------|------------|------------|------------|------------|------------|
| | 2009 | 2010 | 2011 | 2012 | 2013 | 2014 | 2015 | 2016 | 2017 |
| LOADING | | | | | | | | | |
| 16 m ³ Excavators | 7 | 7 | 8 | 16 | 2 | 4 | 4 | 4 | 5 |
| 15 m ³ Excavators | 2 | 5 | 5 | 5 | 8 | 8 | 9 | 9 | 11 |
| 12 m ³ Excavators | 4 | 4 | 4 | 4 | 8 | 8 | 11 | 15 | 15 |
| 7 m ³ Excavators | 4 | 2 | 2 | 2 | 2 | 1 | 1 | 1 | 0 |
| TOTAL | 17 | 18 | 19 | 27 | 20 | 21 | 25 | 29 | 31 |
| HAULING | | | | | | | | | |
| 100-tonne Dump Tr | 102 | 121 | 121 | 120 | 107 | 120 | 112 | 141 | 155 |
| SUPPORT | | | | | | | | | |
| Dozers (Crawler/WI | 19 | 29 | 26 | 25 | 25 | 25 | 21 | 23 | 30 |
| Motor Graders | 6 | 6 | 6 | 6 | 5 | 5 | 6 | 7 | 7 |
| Water Trucks | 4 | 6 | 6 | 7 | 4 | 4 | 4 | 5 | 4 |
| Small Power Shovel: | 10 | 12 | 15 | 12 | 14 | 14 | 10 | 11 | 17 |
| Crusher | 2 | 2 | - | - | - | - | - | - | 0 |
| Crane | | | 2 | 2 | 4 | 4 | 4 | 5 | 5 |
| Lube Trucks | | | | | | | | 4 | 4 |
| Small Backhoe | | | | | | | | 1 | |
| Drilling Machine / Eqpt | | | 1 | 21 | 21 | 20 | 26 | 26 | 26 |
| Drilling Machine / Eqpt | | | | | | | 1 | 1 | |
| TOTAL | 41 | 55 | 55 | 52 | 52 | 52 | 46 | 57 | 93 |
| FLEET CAPACITY (| 62 | 80 | 85 | 80 | 82 | 82 | 88 | 130 | 155 |

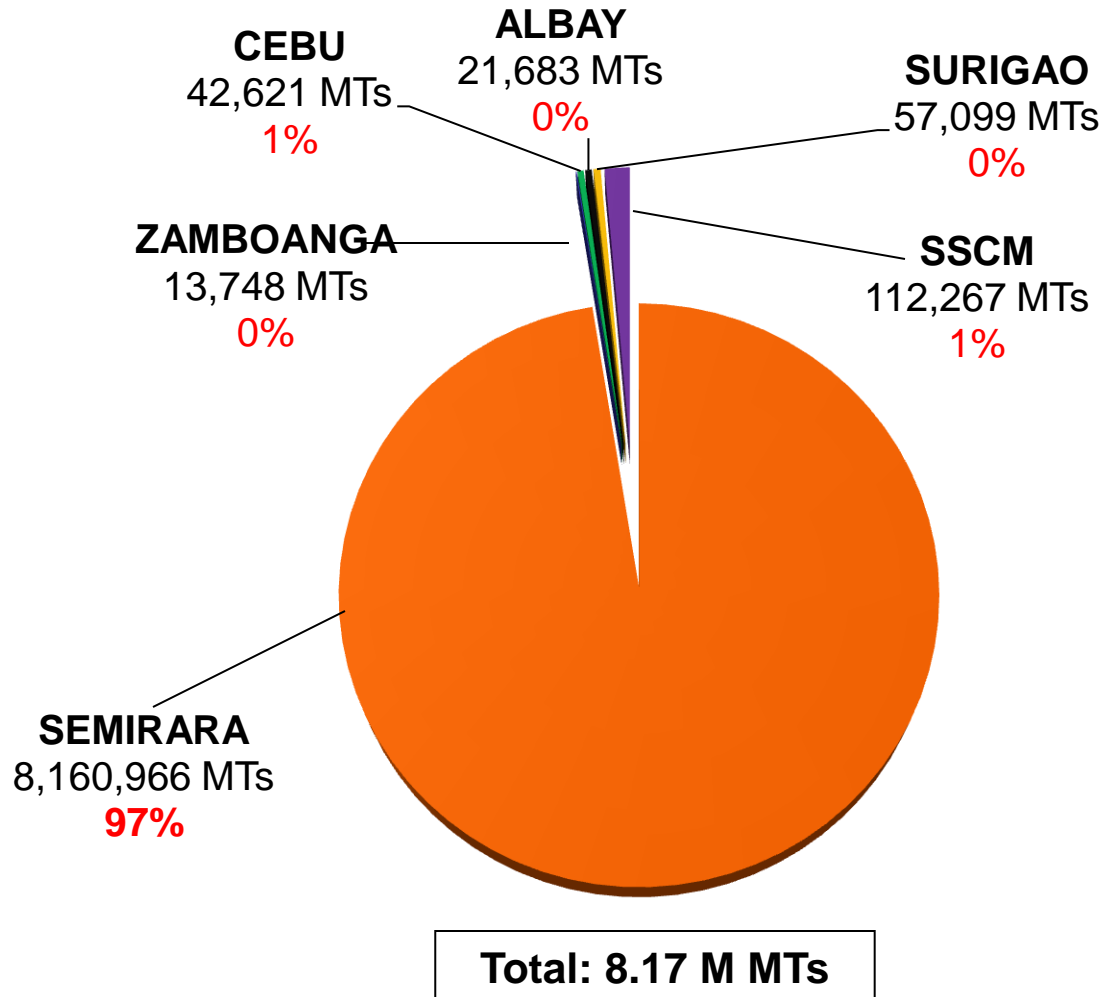
HISTORICAL COAL PRODUCTION

Unong and Panian Annual Coal Production



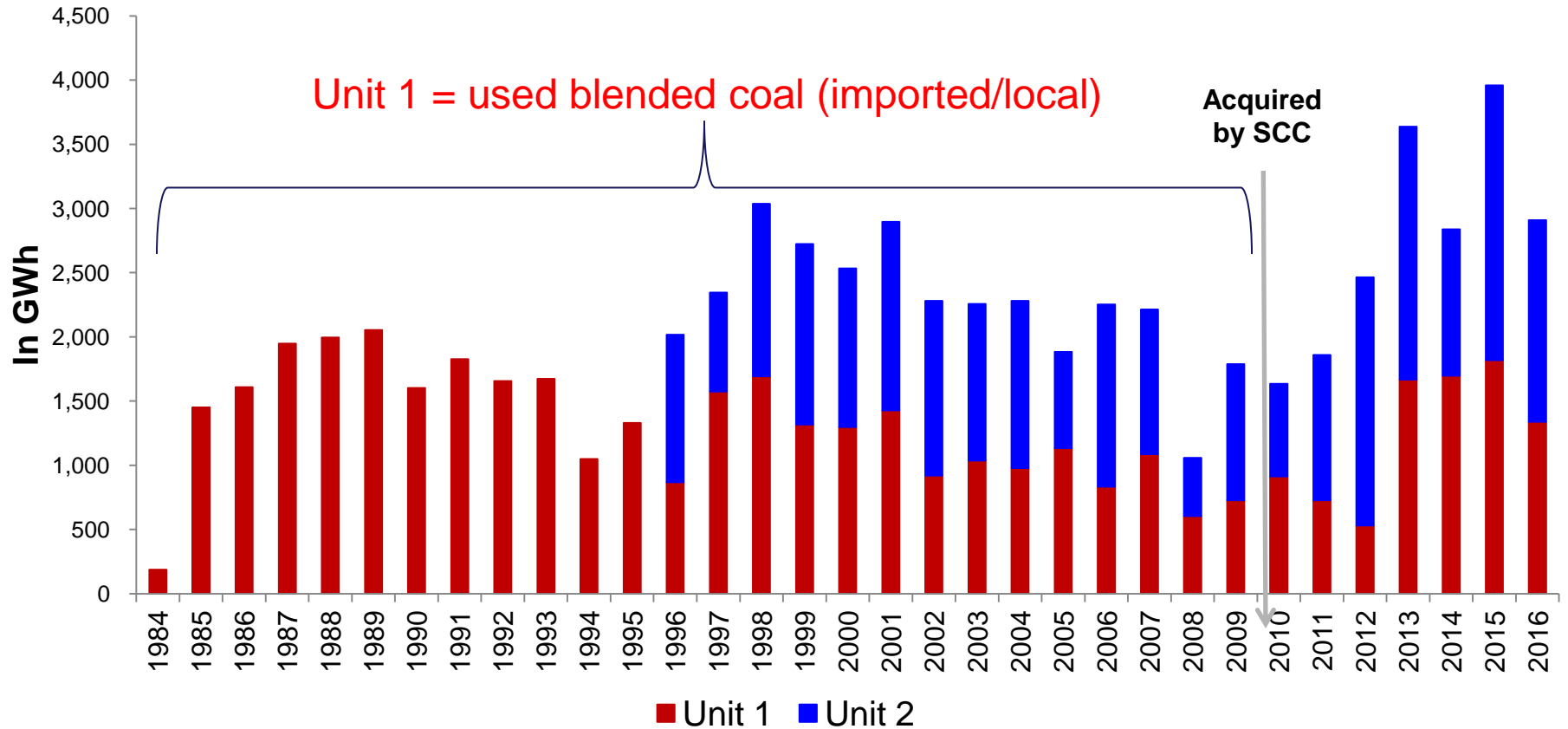
2015 PHILIPPINE ROM COAL PRODUCTION

In metric tons



Source: DOE

SCPC HISTORICAL GROSS ENERGY GENERATION



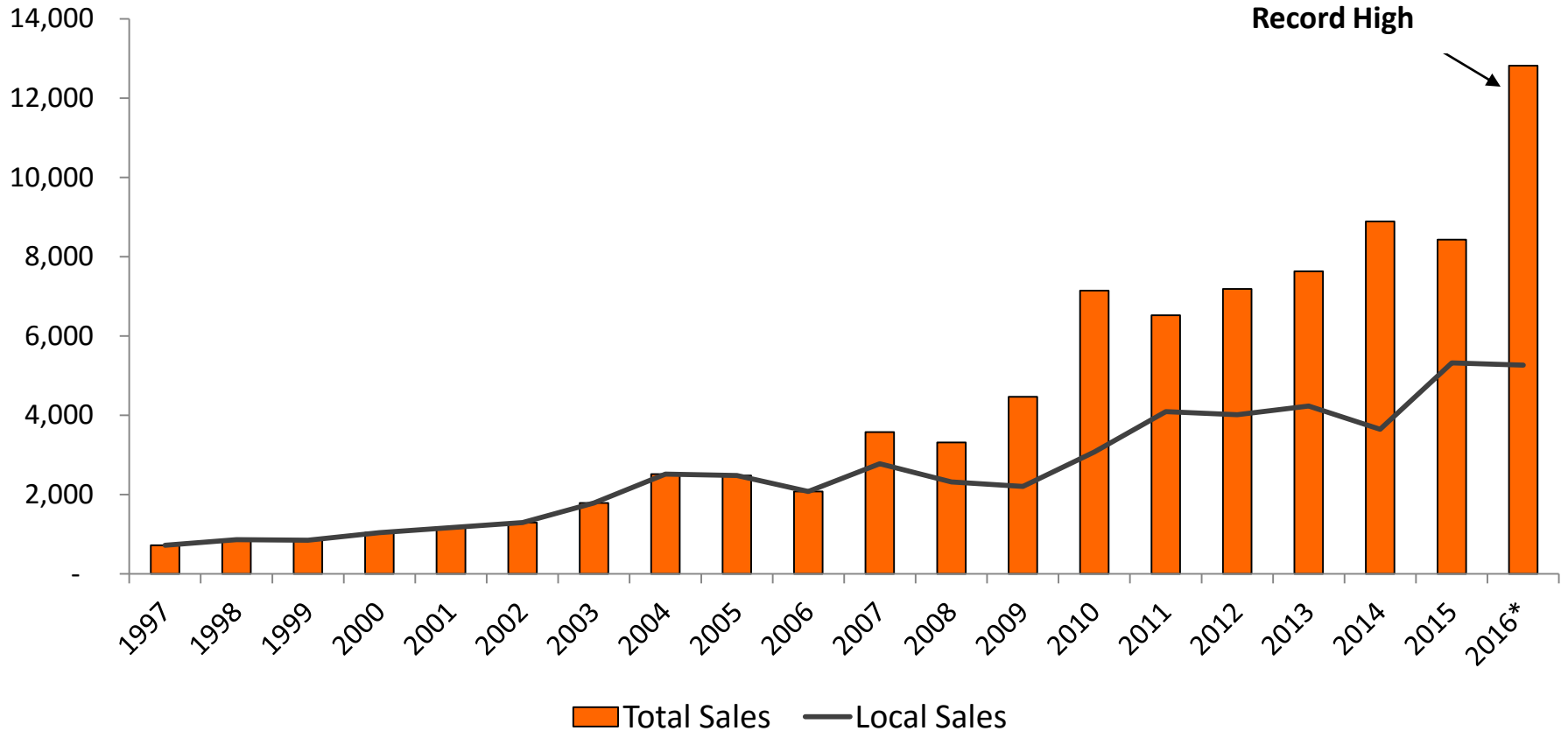
SALES



& MARKETING

COAL SALES VOLUME

In '000 MTs



60% Export ; 40% Local

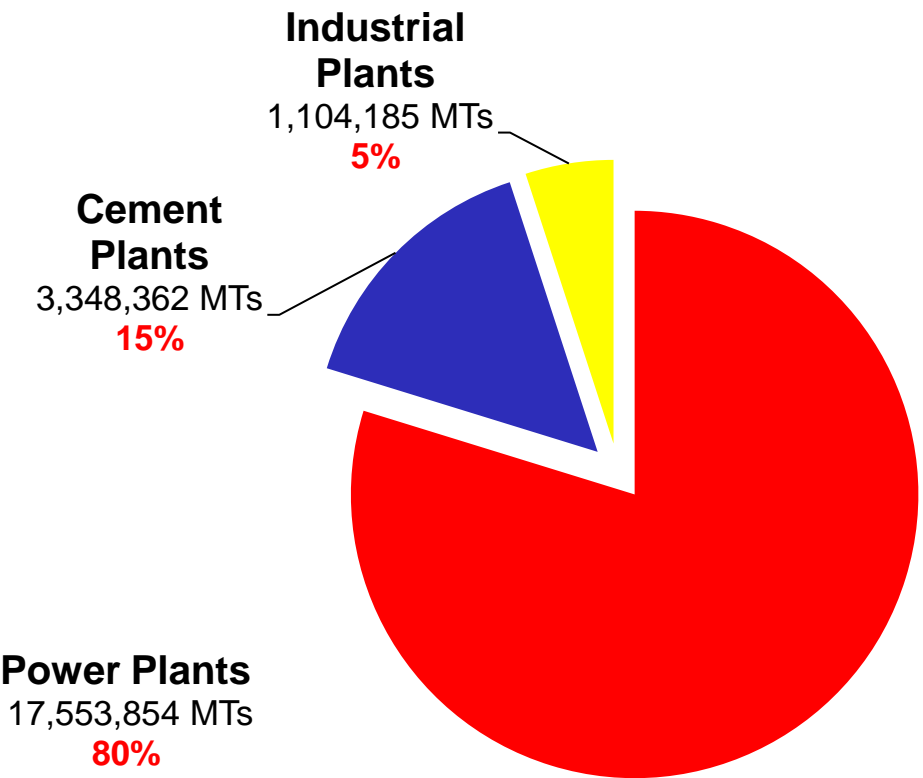


*inclusive of 975K MTs of unwashed coal delivered to SLPGC

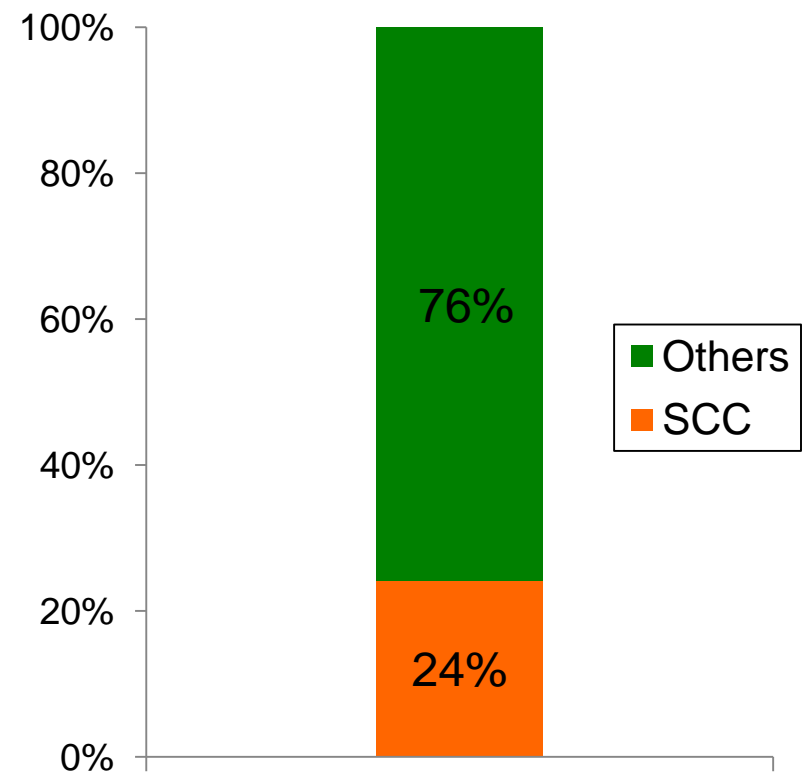
SCC PHILIPPINE MARKET SHARE



2015 COAL CONSUMPTION



SCC MARKET SHARE



**Total Local Consumption:
22.01 M MTs**

Source: DOE

EXISTING COAL-FIRED POWER PLANTS



2 x 647 MW Sual Coal-Fired Power Plant, Pangasinan (TeaM Energy)

2 x 315 MW Masinloc Coal-Fired Power Plant, Pangasinan (AES)

50 MW CFB APEC Coal-Fired Power Plant, Pampanga (TIPCO)

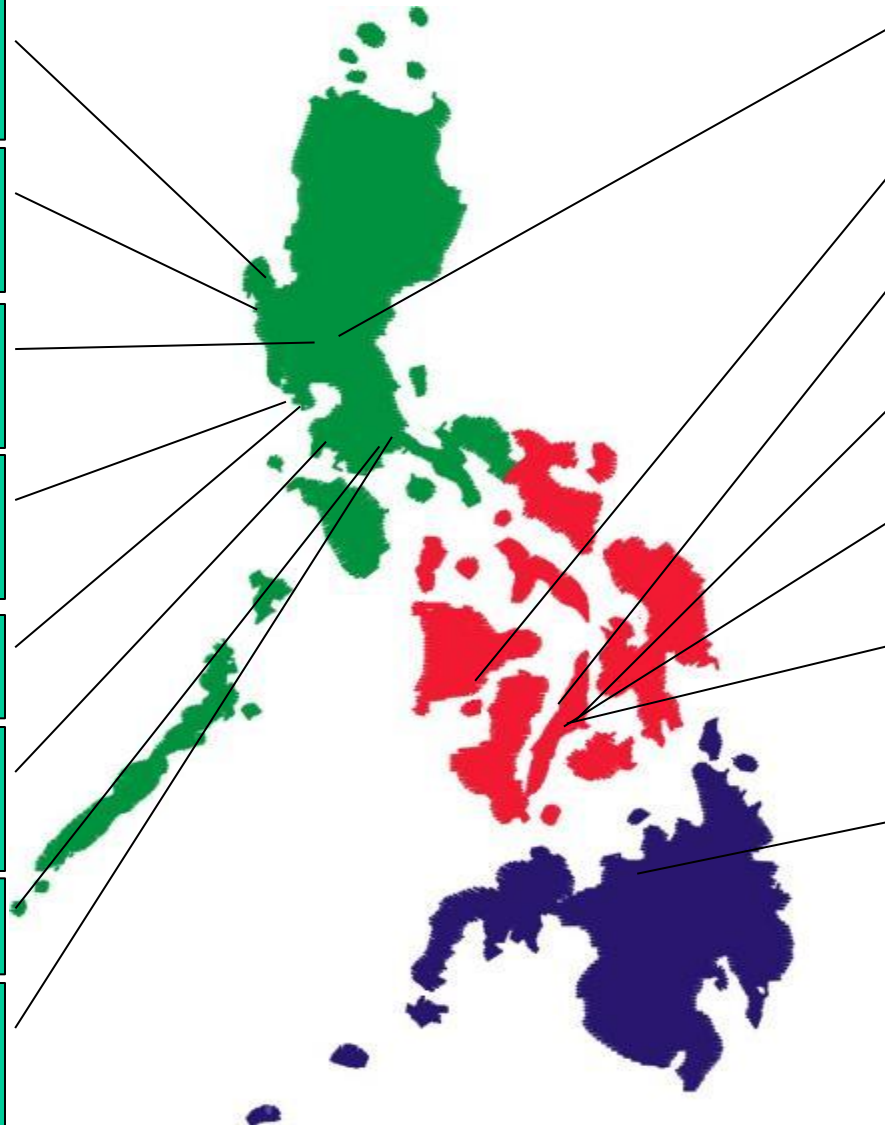
2 x 600 MW CFB Mariveles Coal-Fired Power Plant, Bataan (GN Power) 2012

70 MW Petron Coal-Fired Power Plant, Limay Bataan

2 x 300 MW Batangas Coal-Power Plant, (SEM-Calaca/DMCI Group)

456 MW QPPL Coal-Fired Power Plant, (Quezon Power)

2 x 382 MW Pagbilao Coal-Fired Power Plant, Quezon (TeamM Energy)



25 MW CFB UPPC Coal-Fired Power Plant, Bulacan (UPPC)

2 x 82 MW CFB PEDC, Iloilo (Global Business Power Corp.)

3 x 82 MW CFB CEDC, Cebu (Global Business Power Corp.)

2 x 50 MW CFB CTPP, Cebu (Salcon Power Corp.)

2 x 100 MW CFB KSPC, Cebu (KEPCO-Salcon)

89 MW Toledo Power Corp., Cebu (Global Business Power Corp.)

2 x 105 MW Mindanao Coal-Fired Power Plant, Misamis Oriental (STEAG)

2016 GROSS POWER GENERATION

In GWh (As of 27 March 2017)



| SOURCE | 2015 | % | 2016 | % |
|--------------|---------------|-------------|---------------|-------------|
| Coal | 36,686 | 45% | 43,303 | 48% |
| Oil-based | 5,886 | 7% | 5,661 | 6% |
| Nat Gas | 18,878 | 23% | 19,854 | 22% |
| Geothermal | 11,044 | 13% | 11,070 | 12% |
| Hydro | 8,665 | 11% | 8,111 | 9% |
| Wind | 748 | 1% | 975 | 1% |
| Solar | 139 | 0% | 1,097 | 1% |
| Biomass | 367 | 0% | 726 | 1% |
| TOTAL | 82,413 | 100% | 90,798 | 100% |

Source: DOE

48% of Philippine power supply is generated by coal-fired plants in 2016. The share is expected to increase, as 70% of nearly 5,000 MW of new power plants being built in PH until 2020 are coal-fired.

INSTALLED CAPACITY & DEPENDABLE CAPACITY

In MW (As of 27 March 2017)



| Fuel Type | Installed Capacity | | | Dependable Capacity | | | Total | |
|-----------------------------|--------------------|--------------|--------------|---------------------|--------------|--------------|---------------|---------------|
| | Luzon | Visayas | Mindanao*** | Luzon | Visayas | Mindanao | Installed | Dependable |
| Coal | 5,294 | 1,054 | 1,070 | 4,970 | 1,050 | 959 | 7,418 | 6,979 |
| Natural Gas | 3,430 | 1 | 0 | 3,291 | 0 | 0 | 3,431 | 3,291 |
| Oil-Based | 2,133 | 655 | 828 | 1,655 | 434 | 733 | 3,616 | 2,822 |
| Renewable Energy | 4,120 | 1,574 | 1,264 | 3,684 | 1,329 | 993 | 6,958 | 6,06 |
| <i>Geothermal</i> | <i>843</i> | <i>965</i> | <i>108</i> | <i>777</i> | <i>813</i> | <i>100</i> | <i>1,916</i> | <i>1,690</i> |
| <i>Hydro</i> | <i>2,537</i> | <i>20</i> | <i>1,061</i> | <i>2,323</i> | <i>18</i> | <i>840</i> | <i>3,618</i> | <i>3,181</i> |
| <i>Biomass, Solar, Wind</i> | <i>740</i> | <i>590</i> | <i>95</i> | <i>584</i> | <i>498</i> | <i>53</i> | <i>1,425</i> | <i>1,135</i> |
| Total Capacity | 14,977 | 3,284 | 3,162 | 13,600 | 2,813 | 2,684 | 21,423 | 19,097 |

Source: DOE

FINANCIAL



AS OF 10:15
 PSE 3420.58 22.10
 FIN 760.23 2.14

HDG 2345.22 23.74
 IND 5330.97 25.28
 PRO 1255.13 14.38

pse THE PHILIPPINE STOCK EXCHANGE, INC.

TOP TEN GAINERS

| STOCK | VALUE | PRICE | CHANGE | %CHANGE |
|-------|-------|-------|--------|---------|
| | | | | |
| | | | | |
| | | | | |
| | | | | |
| | | | | |
| | | | | |
| | | | | |
| | | | | |
| | | | | |
| | | | | |

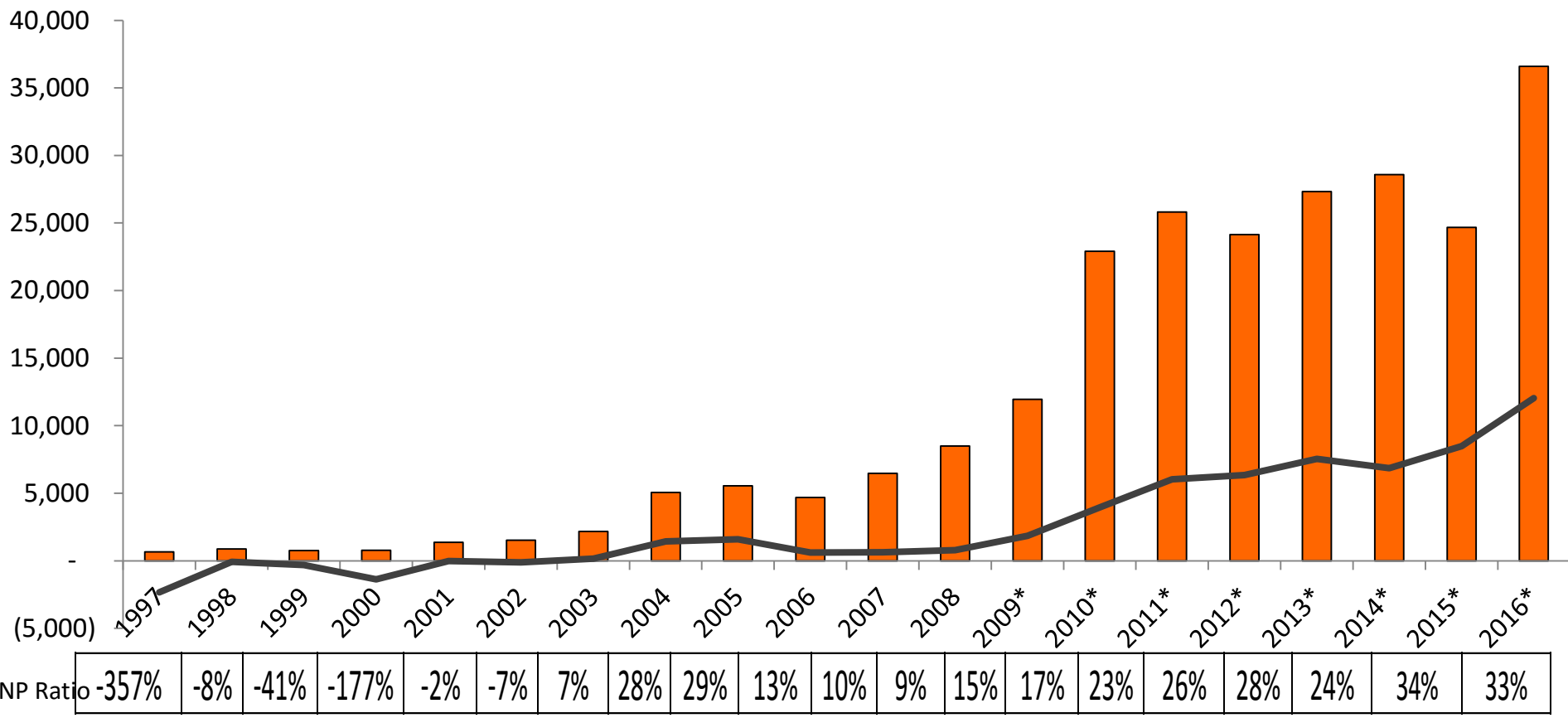
| SYMBOL | BID | ASK | L/T | VOL | SYMBOL | BID | ASK | L/T | VOL |
|--------|-------|-------|--------|---------|--------|--------|--------|--------|----------|
| MFC | 70000 | 74000 | 100000 | 100000 | RPL | 244500 | 245100 | 245000 | 6390 |
| MJC | 260 | 270 | 950000 | 500000 | SECB | 6000 | 420 | 415 | 13300 |
| MPI | 300 | 310 | 300 | 1000 | SFI | 025 | 027 | 026 | 44400000 |
| MRC | 260 | 265 | 073 | 2400000 | SGI | 076 | 081 | 081 | 100000 |
| MUSX | 1675 | 1675 | 007 | 0075 | SHNG | 178 | 182 | 180 | 100000 |
| MNC | 1000 | 1100 | 1700 | 9158000 | SLF | 071 | 119500 | 119500 | 20 |
| NRCP | 450 | 480 | 485 | 5000 | SM | 42750 | 43000 | 43000 | 41680 |
| PAL | 480 | 485 | 184 | 12000 | SMB | 980 | 1000 | 1000 | 10000 |
| PAX | 184 | 186 | 184 | 12000 | SMC | 6150 | 6200 | 6200 | 10000 |
| PCEV | 780 | 800 | 790 | 950 | SMCB | 6850 | 6900 | 6900 | 10000 |
| PCOR | 650 | 660 | 155 | 2000 | SMDC | 640 | 700 | 397000 | 10000 |
| PPREF | 10500 | 10600 | 10500 | 1300 | SMP | 3850 | 400 | 3850 | 10000 |
| PHN | 940 | 960 | 950 | 850000 | SMPH | 1075 | 1100 | 1075 | 102200 |
| PEP | 030 | 032 | 030 | 1500000 | SPC | 345 | 375 | 360 | 10000 |
| PJP | 275 | 280 | 275 | 500000 | SPH | 240 | 250 | 242 | 10000 |
| PNB | 3550 | 3600 | 3550 | 3588000 | SPM | 040 | 110 | 098 | 10000 |
| PNX | 640 | 640 | 640 | 850000 | SUN | 039 | 048 | 046 | 10000 |
| PO | 260 | 270 | 285 | 850000 | TBGI | 375 | 380 | 380 | 10000 |
| POPI | 040 | 043 | 042 | 10000 | TDY | 192 | 246 | 246 | 10000 |
| PRC | 210 | 230 | 210 | 10000 | TOL | 580 | 600 | 600 | 10000 |
| PRIM | 200 | 208 | 202 | 10000 | TUNA | 62 | 66 | 64 | 40000 |
| PSB | 5100 | 5150 | 5150 | 1000 | URC | 4250 | 4300 | 4300 | 100000 |
| PSE | 25150 | 26000 | 26000 | 120 | V | 13 | 140 | 140 | 4000 |
| RCB | 2050 | 2075 | 2050 | 77400 | VLL | 218 | 220 | 218 | 360000 |
| RCM | 425 | 440 | 430 | 10000 | WEB | 1400 | 1450 | 1450 | 4000 |
| REG | 154 | 152 | 152 | 10000 | WPI | 025 | 027 | 027 | 10000 |
| RLC | 1375 | 1400 | 1400 | 69700 | | | | | |
| ROX | 260 | 295 | 255 | 10000 | | | | | |

Isidro A. Consunji
 Vice-Chairman / Chief Executive Officer
 Semirara Mining Corporation

HIGHLIGHTS

CONSOLIDATED REVENUES AND NIAT

In Million Pesos

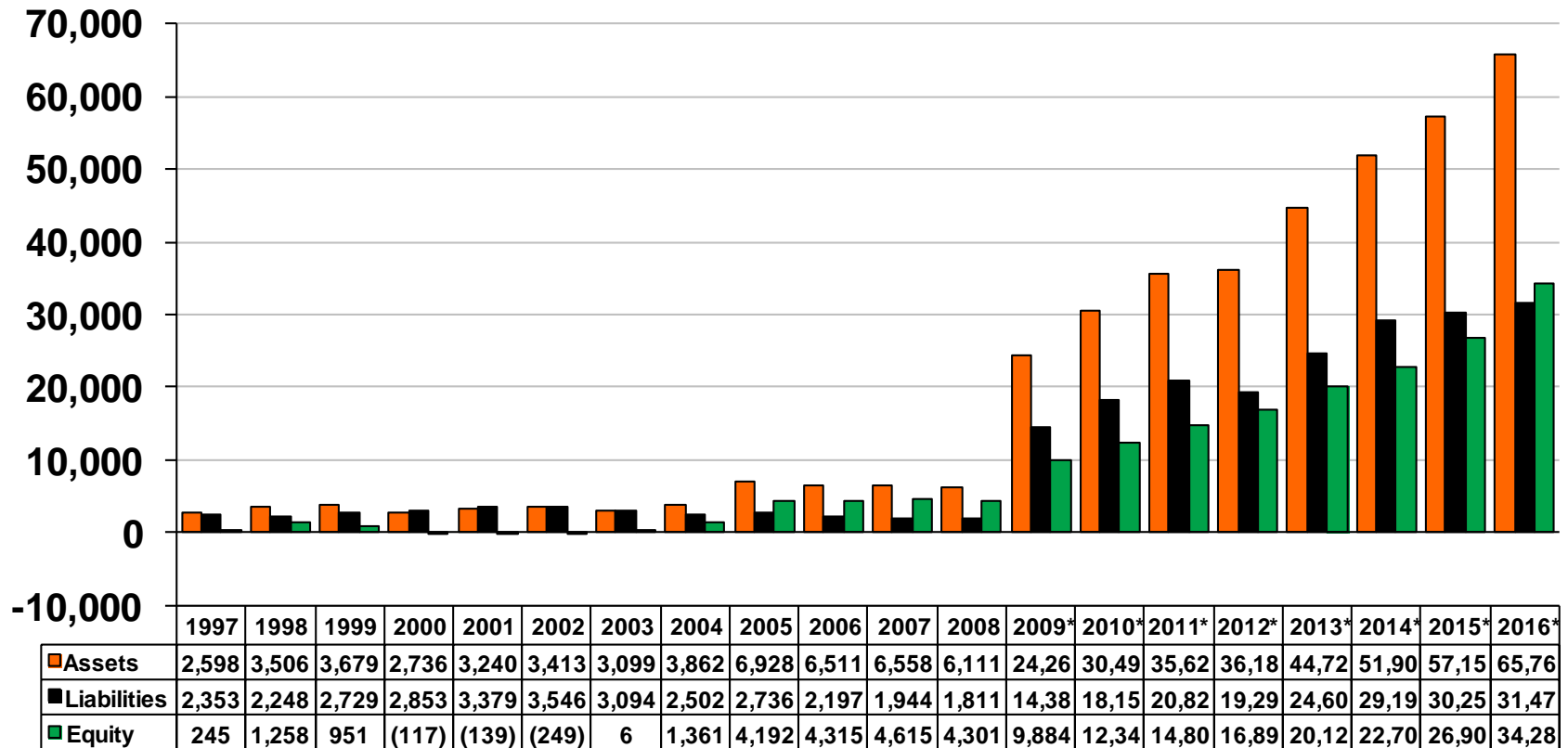


Revenues NIAT

**Consolidated*

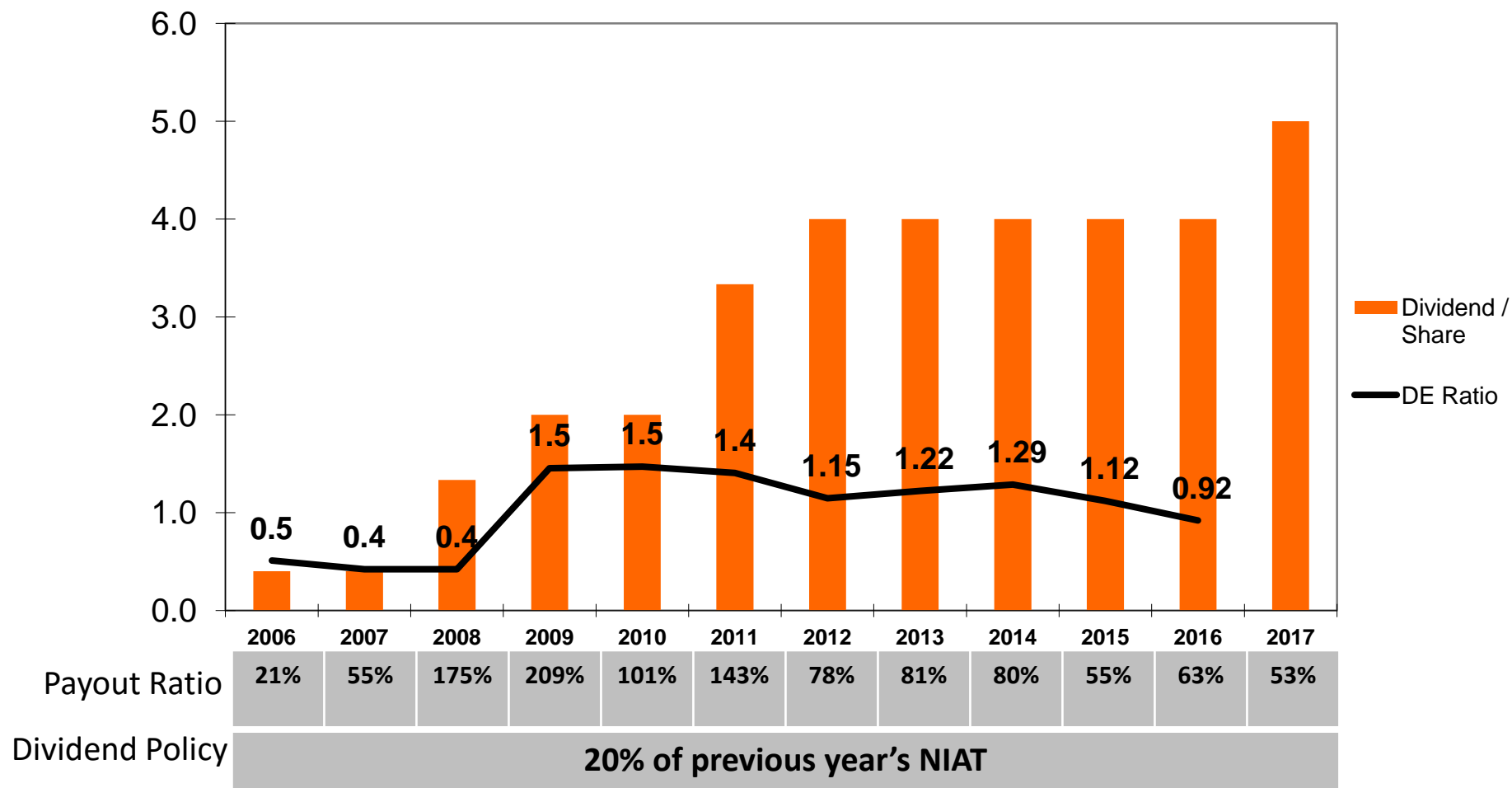
BALANCE SHEET

In Million Pesos



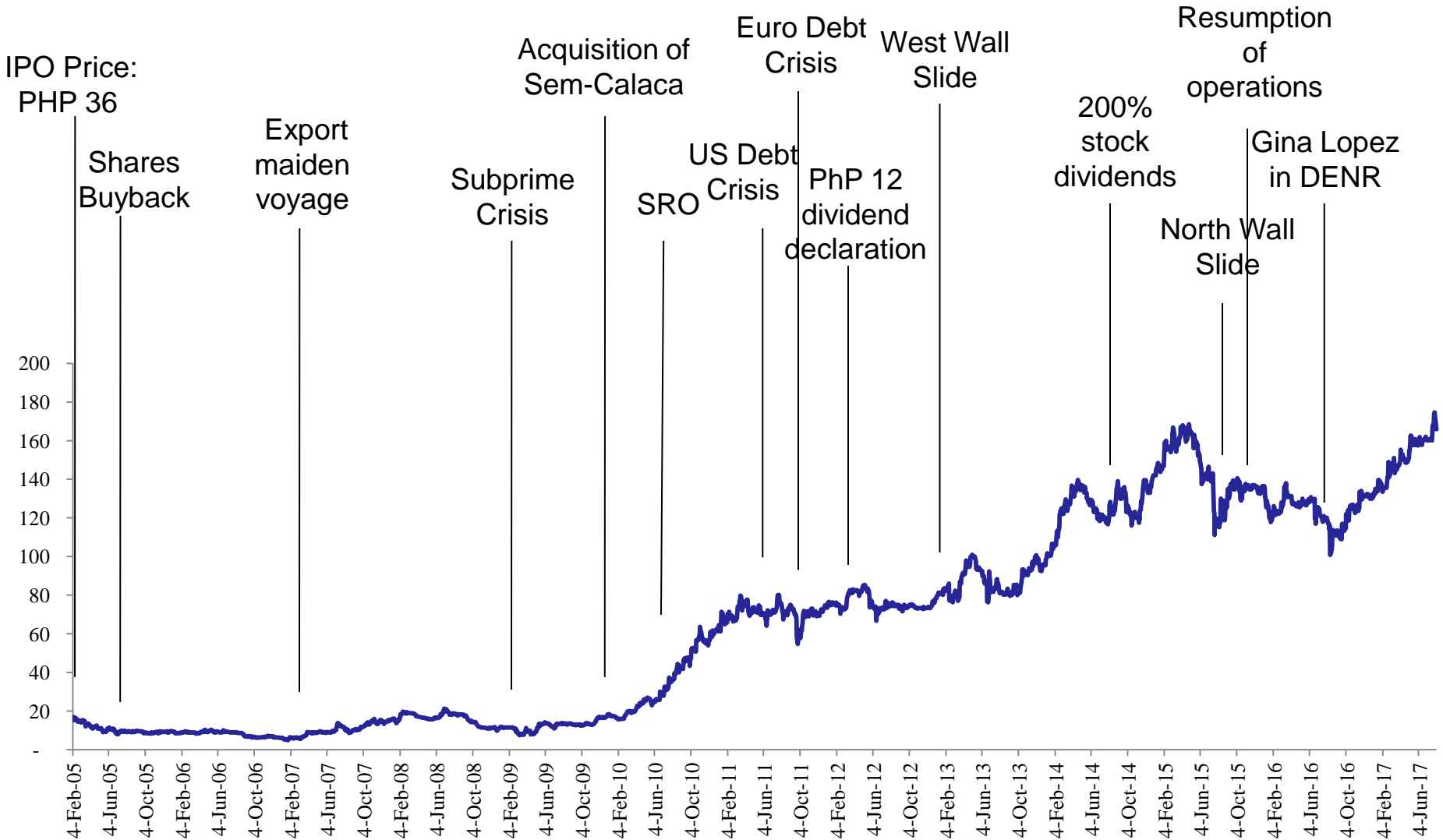
**Consolidated*

HISTORICAL DIVIDENDS



** restated to 2014 post-stock dividend outstanding shares*

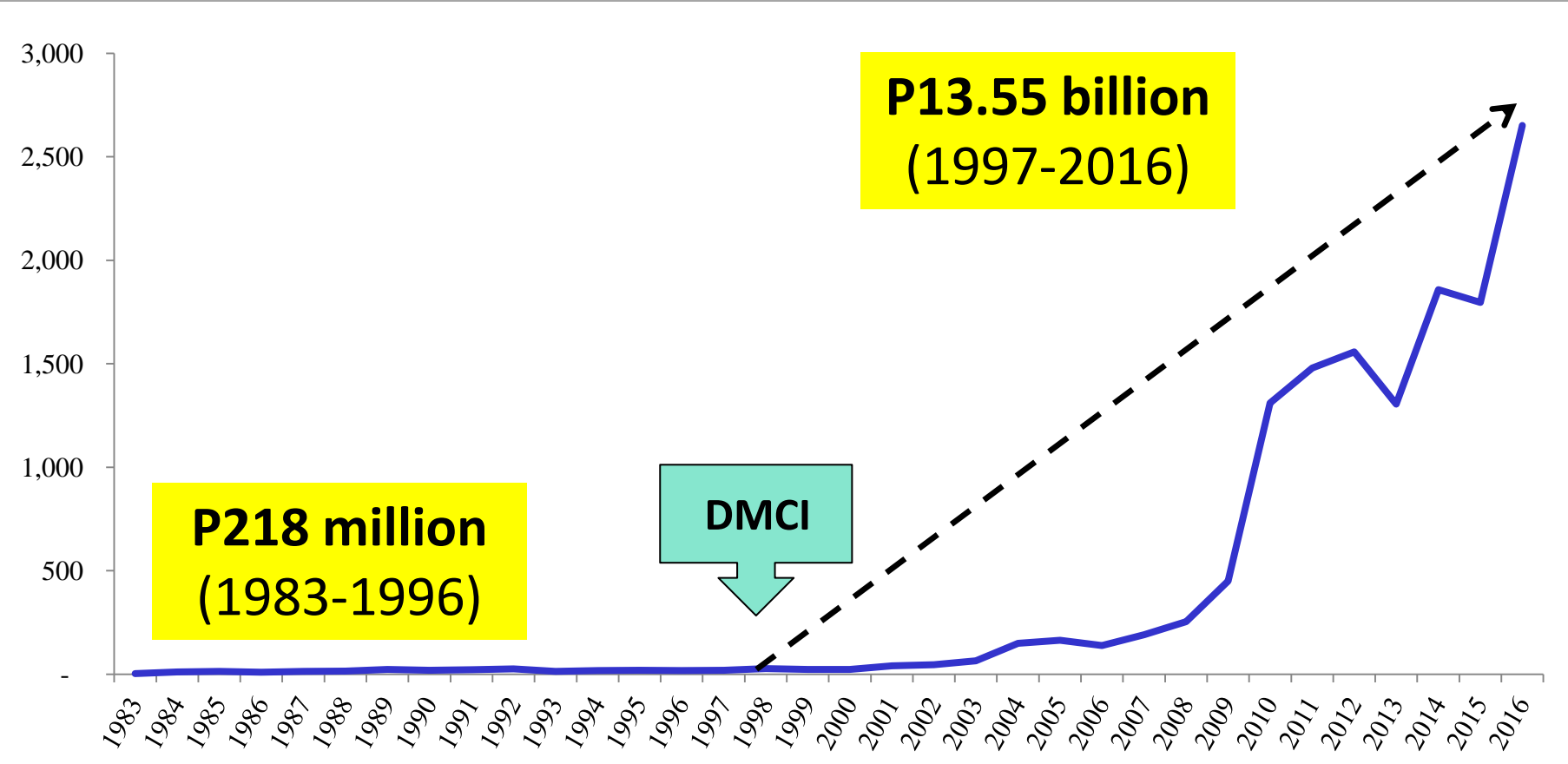
STOCK PRICE MOVEMENT



GOVERNMENT ROYALTIES



In million PHP



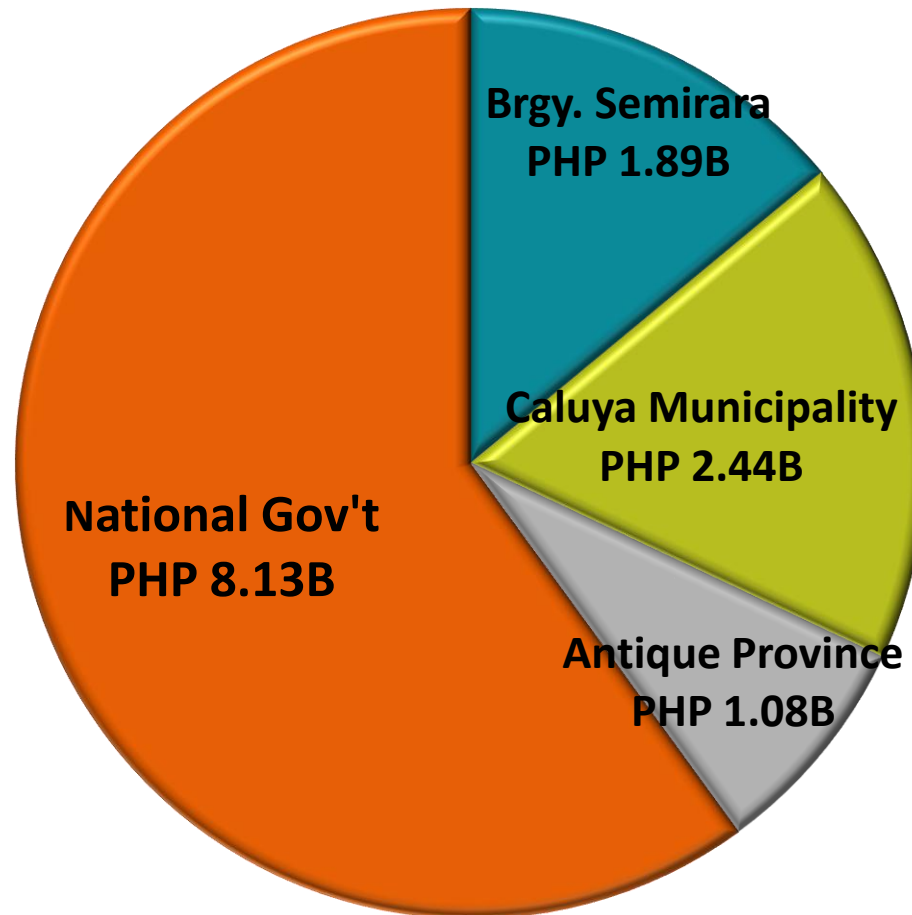
Royalties paid to the government since the DMCI group bought into the company and took over management and operations totaled to PHP13.55 billion as of 2016.

GOVERNMENT ROYALTIES

In million PHP



1997-2016 Gov't Royalties: PHP13.55B



2015 GOV'T COLLECTION FROM ENERGY RESOURCES

In thousand PHP



| Region | Collection | 40% LGU share |
|--------------|----------------------|-------------------|
| CAR | 966.18 | 386.47 |
| RO I | 12,766.63 | 5,106.65 |
| RO IV-A | 47,082.04 | 18,832.82 |
| RO V | 51,782.59 | 20,713.04 |
| RO VI | 1,812,099.52 | 724,839.81 |
| RO VII | 83,877.65 | 33,551.06 |
| RO VIII | 123,030.33 | 49,212.13 |
| RO IX | 791.80 | 316.72 |
| RO X | 297.80 | 119.12 |
| RO XI | 4,083.25 | 1,633.30 |
| RO XII | 17,278.23 | 6,911.29 |
| RO XIII | 4,138.57 | 1,655.43 |
| Total | 2,158,194.58* | 863,277.83 |

*proceeds from petroleum, coal, geothermal, hydrothermal, and wind resources

Source: <http://www.gov.ph/2016/06/15/lgus-shares-national-wealth/>

SCC 2015
Government
Royalties payment:

P1.796 Billion

83% of total royalty
collections by the
government

OPPORTUNITIES



| | Current Market | Market Share | Market Growth | Opportunities |
|--------------|--|---|--|--|
| Coal | <u>Annual Production:</u> 12 M MTs <u>2015 Annual Domestic Consumption:</u> 22.01 M MTs | 97% in production 24% in consumption | 8% annual growth rate in domestic coal consumption | <ul style="list-style-type: none"> ➤ SCC's ECC allows maximum production of 16 M MTs ➤ SCC's coal qualities are acceptable to new coal-fired plants ➤ Expansion in power creates a captured market for coal |
| Power | National Installed Capacity at 18.7 GW and Dependable Capacity at 13.8 GW | 600 MW or 12.7% of coal-fired power plants | 5% annual demand growth expected 2.9GW of capacity coming online up to 2019 | <ul style="list-style-type: none"> ➤ SCC has the ECC to expand its power business to up to 1,800 MW. ➤ As the only integrated operator of coal-fired power plants, SCC is the lowest cost producer, thereby making it competitive in a tight market. |

CSR RE-DEFINED from 5Es* to COMMUNITY SELF-SUFFICIENCY



CORPORATE SUSTAINABILITY *and* RESPONSIBILITY

Towards Self-Sufficient Communities

Semirara Island, Caluya, Antique Province

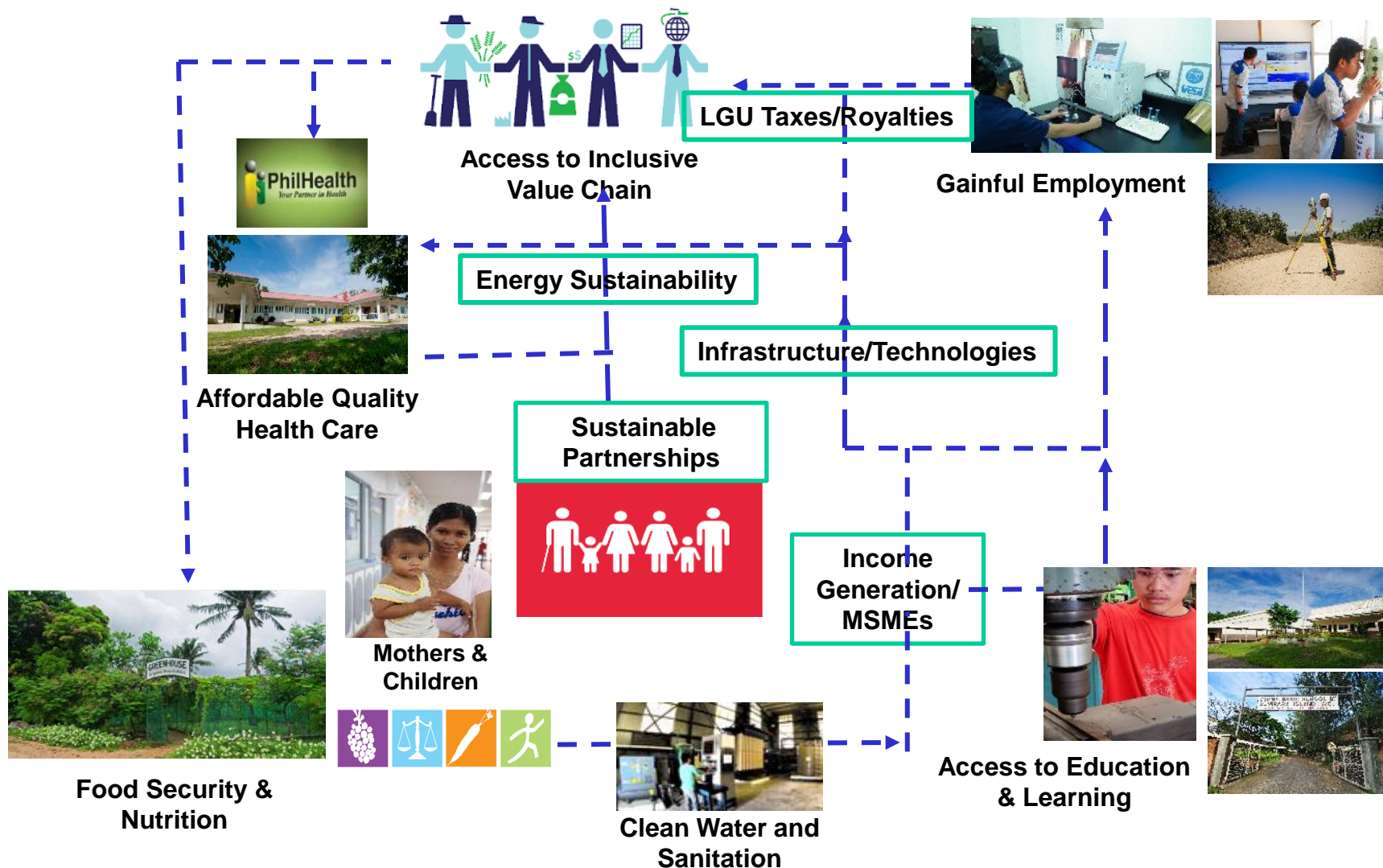


* Electrification; Economic Empowerment; Education & Skills Training; Environmental Protection; Emergency Preparedness



- ECONOMIC : VALUE ADDED
- BRAND VALUE
- REPUTATIONAL VALUE
- SOCIETAL VALUE

SOCIAL DEVELOPMENT/ ECONOMIC: VALUE ADDED

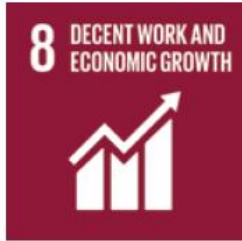


ENVIRONMENTAL STEWARDSHIP



COMMITMENT TO ENVIRONMENTAL STEWARDSHIP

UN 17 SUSTAINABLE DEV'T GOALS



Our corporate sustainability and social programs and initiatives are, and will continue to be aligned to the United Nations' 17 Sustainable Development Goals (SDGs) in close collaboration with the LGU.

END OF PRESENTATION

Thank you!

DISCLAIMER

- Semirara Mining and Power Corporation (the “Company”) and its advisors assumes no responsibility or liability regarding actions or decision that may be taken regarding any information resulting from unintentional errors or omissions contained in this document.
- In addition, this document contains financial information and results of operation, and may also contain certain projections, plans, strategies, and objectives of the Company, that are not statements of historical fact which would be treated as forward looking statements within the meaning of applicable law. Forward looking statements are subject to risks and uncertainties that may cause actual events and the Company’s future results to be materially different than expected or indicated by such statements. No assurance can be given that the results anticipated by the Company, or indicated by any such forward looking statements, will be achieved.
- This document is not an offer to sell securities or a solicitation of an offer to buy securities.

